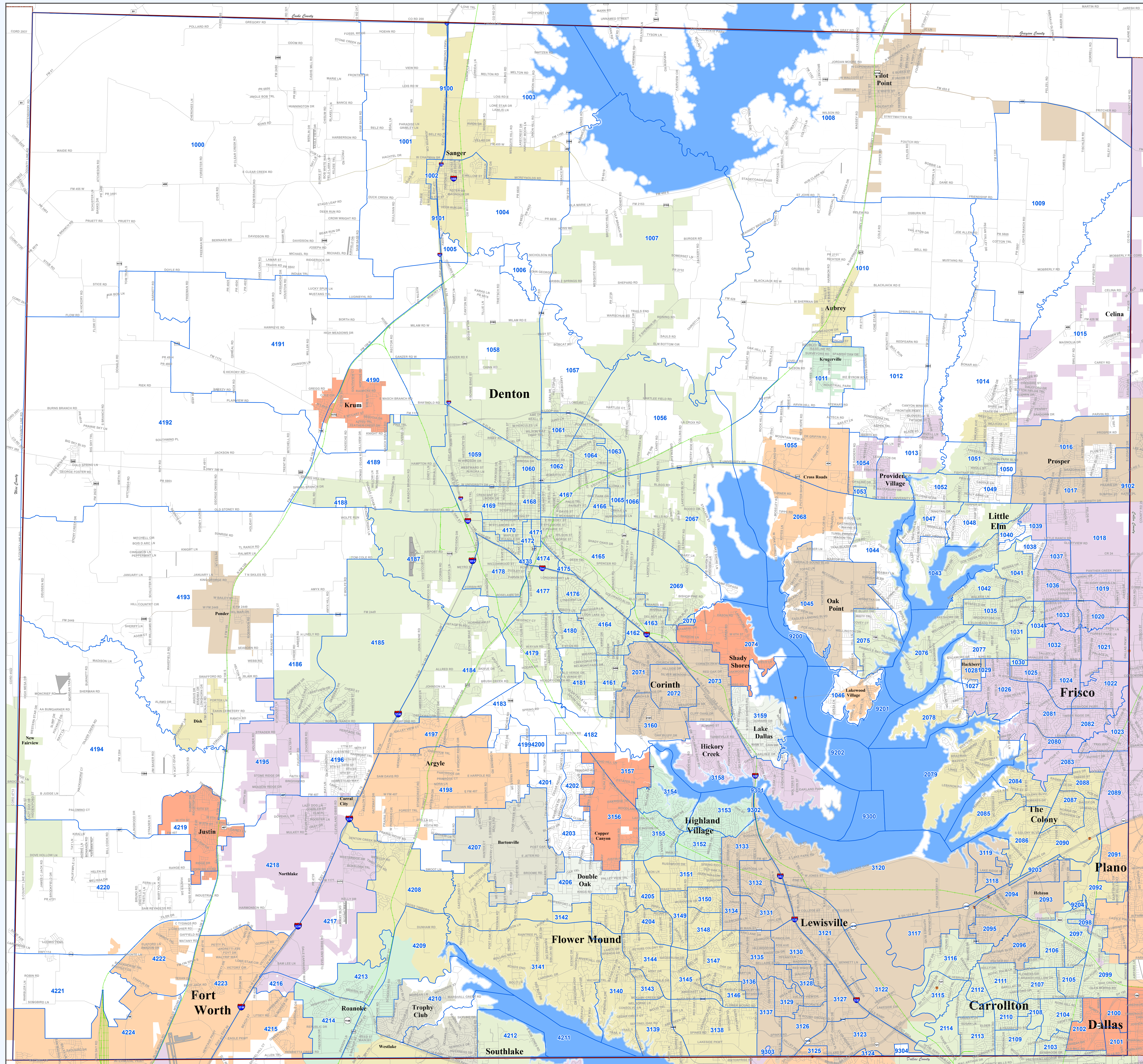


DENTON COUNTY

Voter Precincts Effective January 1, 2022



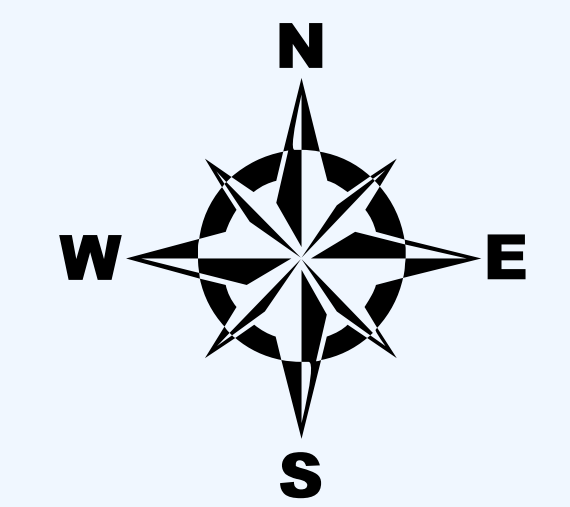
Andy Eads- County Judge
 Ryan Williams- Commissioner Precinct 1
 Ron Marchant- Commissioner Precinct 2
 Bobbie J. Mitchell- Commissioner Precinct 3
 Dianne Edmondson- Commissioner Precinct 4



- INTERSTATE
- U.S. HIGHWAY
- STATE HIGHWAY
- FARM TO MARKET
- MAJOR THOROUGHFARES
- MINOR ROADS
- RAILROADS
- AIRPORTS
- STREAMS
- LAKES & PONDS
- VOTER PRECINCTS

City Population

Denton > 100,000
 Lewisville 40,000- 100,000
 Corinth 10,000- 39,999
 Sanger 2,000- 9,999
 Ponder < 2,000



NAD 1983 StatePlane
 (Zone 5351)
 Texas North Central
 Lambert Conformal Conic

1:66,186

November 30, 2021

This product is for informational purposes and may not have been prepared for or be suitable for legal, engineering, or surveying purposes. It does not represent an on-the-ground survey and represents only the approximate relative location of property boundaries.

Denton County does not guarantee the correctness or accuracy of any features on this product and assumes no responsibility in connection therewith. This product may be revised at any time without notification to any user.

Contact Information

Elections Department: www.votedenton.gov
 E-mail: elections@dentoncounty.gov
 Phone: (940) 349-3200
 Fax: (940) 349-3201

